



BATTERY INTERCELL CONNECTORS

► ABOUT FRÖTEK

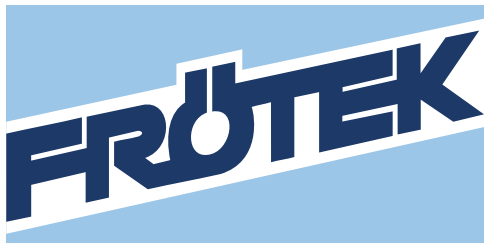
TVH is a distributor for all types of FRÖTEK cell connectors: flex, perfect or rigid connectors, flex end and perfect end take-offs. FRÖTEK offers all products for the assembly of industrial batteries from individual battery cells. Furthermore, it can supply products for starter batteries and for cell formation. In short: **FRÖTEK supplies everything above cell level from one source and in OEM quality.**

WHY DID WE OPT FOR FRÖTEK AS PARTNER?

Because FRÖTEK is a competent partner with **many years of experience** in the **global battery market**. Moreover, the company invests in Research & Development to constantly improve its products. FRÖTEK owes its continuous growth to its development strength, consistent investment strategy, flexibility and a strong international focus.

WHY ARE FRÖTEK CONNECTORS YOUR BEST CHOICE?

All FRÖTEK cell connectors are of **German quality** and are screw-mounted, which means that they are **super easy to attach** and require no welding or soldering.



▶ INTERCELL CONNECTORS & TAKE-OFF LEADS

P 04 Flex connectors



- ▶ Two-headed connector
- ▶ To connect two battery cells
- ▶ Extra flexible
- ▶ Suitable for traction batteries

P 05 Perfect connectors



- ▶ Two-headed connector
- ▶ To connect two battery cells
- ▶ Extra flexible
- ▶ Cap-shaped protection
- ▶ Suitable for traction batteries

P 06 Rigid connectors



- ▶ Two-headed connector
- ▶ To connect two battery cells
- ▶ Rigid, stiff
- ▶ Only suitable for stationary use

P 07 Flex end take-offs



- ▶ One-headed end piece
- ▶ To connect to charging plug
- ▶ Extra flexible
- ▶ Suitable for traction batteries

P 08 Perfect end take-offs



- ▶ One-headed end piece
- ▶ To connect to charging plug
- ▶ Extra flexible
- ▶ Cap-shaped protection
- ▶ Suitable for traction batteries

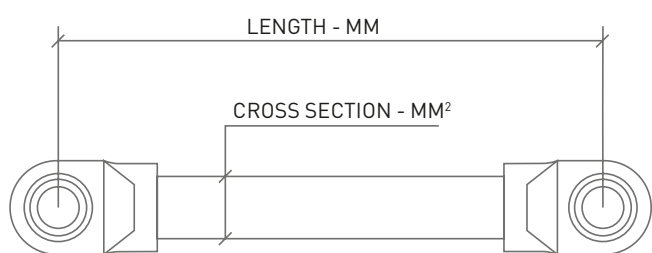
All bolts & caps



- ▶ Easy to assemble
- ▶ Perfect insulation
- ▶ Bolts: loctite secured against vibrations and shocks
- ▶ Caps: also available with testing hole



► FLEX CONNECTORS



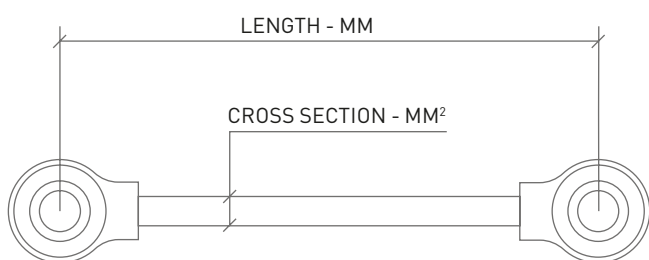
Cross section mm ²	Length mm	REF 1 piece	REF box	Pieces/box	Cross section mm ²	Length mm	REF 1 piece	REF box	Pieces/box
25	75	166TA1660	166TA1840	300	50	130	166TA1675	166TA1864	200
25	95	166TA1661	166TA1841	300	50	150	166TA1676	166TA1865	200
25	110	166TA1662	166TA1842	300	50	170	166TA1677	166TA1866	150
25	130	166TA1663	166TA1843	250	50	190	134TA8524	166TA1867	120
25	150	166TA1664	166TA1844	250	50	210	166TA1678	166TA1868	120
25	170	166TA1665	166TA1845	200	50	230	166TA1679	166TA1869	100
25	190	166TA1666	166TA1846	200	50	250	166TA1680	166TA1870	100
25	210	166TA1667	166TA1847	150	50	300	166TA1681	166TA1871	100
25	300	165TA3757	166TA1848	100	70	95	166TA1682	166TA1872	200
35	75	165TA3758	166TA1849	300	70	110	166TA1683	166TA1873	200
35	95	165TA3759	166TA1850	300	70	130	166TA1684	166TA1874	150
35	110	165TA3760	166TA1851	300	70	150	166TA1685	166TA1875	150
35	130	144TA6324	166TA1852	250	70	170	166TA1686	166TA1876	120
35	150	166TA1668	166TA1853	250	70	190	166TA1687	166TA1877	120
35	170	166TA1669	166TA1854	200	70	210	166TA1688	166TA1878	120
35	190	166TA1670	166TA1855	100	70	250	166TA1689	166TA1879	100
35	210	166TA1671	166TA1856	100	70	300	166TA1690	166TA1880	80
35	230	166TA1672	166TA1857	100	95	110	166TA1691	166TA1881	100
35	250	165TA3761	166TA1858	100	95	130	166TA1692	166TA1882	76
35	300	165TA3762	166TA1859	100	95	150	166TA1693	166TA1883	76
50	75	165TA3763	166TA1860	250	95	170	166TA1694	166TA1884	60
50	85	165TA3764	166TA1861	250	95	190	166TA1695	166TA1885	50
50	95	166TA1673	166TA1862	250	95	210	166TA1696	166TA1886	50
50	110	166TA1674	166TA1863	250	95	300	166TA1697	166TA1887	50

TERMINAL BOLTS

Type	Dimensions	Testing point	REF 1 piece	REF box	Pieces/box
Terminal bolt	M10 x 18mm	No	166TA1785	166TA1975	500
Terminal bolt	M10 x 18mm	Yes	166TA1786	166TA1976	500
Terminal bolt	M10 x 22mm	No	166TA1787	166TA1977	500
Terminal bolt	M10 x 22mm	Yes	166TA1788	166TA1978	500
Terminal bolt	M10 x 25mm	Yes	166TA1789	166TA1979	500
Terminal bolt	M8 x 18mm	No	166TA1790	166TA1980	500
Terminal bolt	M8 x 18mm	Yes	166TA1791	166TA1981	500
Terminal bolt	M8 x 22mm	Voltage tap	166TA1792	166TA1982	500
Terminal bolt	M10 x 22mm	Voltage tap	166TA1793	166TA1983	500
Auxiliary terminal bolt	M10 x 22mm	AUX contact	166TA1793	166TA1983	500
Cap for auxiliary terminal bolt	-	No	166TA2547	-	-
Screw for auxiliary terminal bolt to set measuring points	-	-	150TA9732	-	-



► PERFECT CONNECTORS



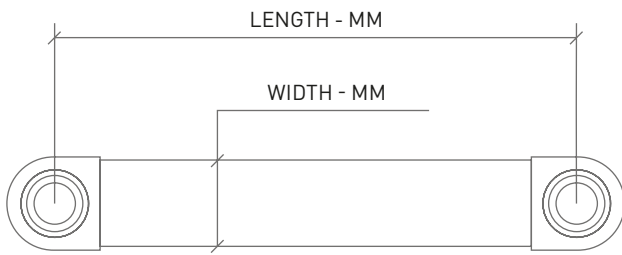
Cross section mm ²	Length mm	REF 1 piece	REF box	Pieces/ box	Cross section mm ²	Length mm	REF 1 piece	REF box	Pieces/ box
25	80	166TA1745	166TA1935	216	50	150	166TA1765	166TA1955	144
25	95	166TA1746	166TA1936	192	50	170	166TA1766	166TA1956	120
25	110	166TA1747	166TA1937	168	50	200	166TA1767	166TA1957	120
25	130	166TA1748	166TA1938	156	50	300	166TA1768	166TA1958	60
25	150	166TA1749	166TA1939	144	70	95	166TA1769	166TA1959	180
25	200	166TA1750	166TA1940	120	70	110	166TA1770	166TA1960	144
25	250	166TA1751	166TA1941	84	70	130	166TA1771	166TA1961	144
25	300	166TA1752	166TA1942	48	70	150	166TA1772	166TA1962	144
35	80	166TA1753	166TA1943	216	70	170	166TA1773	166TA1963	120
35	95	166TA1754	166TA1944	192	70	200	166TA1774	166TA1964	108
35	110	166TA1755	166TA1945	168	70	250	166TA1775	166TA1965	84
35	130	166TA1756	166TA1946	156	70	300	166TA1776	166TA1966	60
35	150	166TA1757	166TA1947	144	95	95	166TA1777	166TA1967	180
35	170	166TA1758	166TA1948	120	95	110	166TA1778	166TA1968	144
35	200	166TA1759	166TA1949	120	95	130	166TA1779	166TA1969	120
35	250	166TA1760	166TA1950	48	95	150	166TA1780	166TA1970	120
35	300	166TA1761	166TA1951	48	95	170	166TA1781	166TA1971	120
50	95	166TA1762	166TA1952	180	95	190	166TA1782	166TA1972	100
50	110	166TA1763	166TA1953	144	95	210	166TA1783	166TA1973	90
50	130	166TA1764	166TA1954	144	95	300	166TA1784	166TA1974	60

TERMINAL BOLTS & CAPS

Type	Dimensions	Testing point	REF 1 piece	REF box	Pieces/ box
Terminal bolt	M10 x 20mm	No	166TA1794	166TA1984	500
Terminal bolt	M10 x 20mm	No	166TA1795	166TA1985	500
Cap		Yes	145TA2144		
Cap	-	No	145TA2145		
Auxiliary terminal bolt	M10 x 22mm	AUX contact	166TA1793	166TA1983	500
Cap for auxiliary terminal bolt	-	No	166TA2547	-	-
Screw for auxiliary terminal bolt to set measuring points	-	-	150TA9732	-	-



► RIGID CONNECTORS



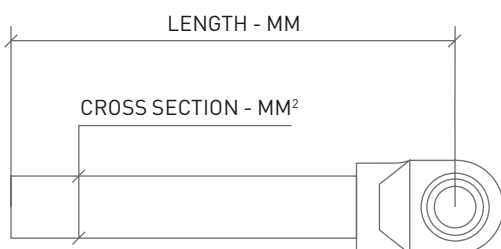
Width mm	Thickness mm	Length mm	REF 1 piece	Width mm	Thickness mm	Length mm	REF 1 piece
30	3	60	166TA1626	30	5	135	166TA1643
30	3	80	166TA1627	30	5	155	166TA1644
30	3	82	166TA1628	30	5	163	166TA1645
30	3	85	166TA1629	30	5	175	166TA1646
30	3	92	166TA1630	30	5	195	166TA1647
30	3	115	166TA1631	30	10	115	166TA1648
30	3	123	166TA1632	30	10	125	166TA1649
30	3	125	166TA1633	30	10	132	166TA1650
30	3	135	166TA1634	30	10	135	166TA1651
30	3	143	166TA1635	30	10	155	166TA1652
30	3	155	166TA1636	20	2	45,5	166TA1653
30	3	163	166TA1637	20	2	61	166TA1654
30	3	175	166TA1638	20	2	64,5	166TA1655
30	3	178	166TA1639	20	2	74,5	166TA1656
30	5	115	166TA1640	20	2	45,5	166TA1657
30	5	125	166TA1641	20	2	61	166TA1658
30	5	132	166TA1642	20	2	64,5	166TA1659

TERMINAL BOLTS

Type	Dimensions	Testing point	REF 1 piece	REF box	Pieces/box
Terminal bolt	M10 x 18mm	No	166TA1785	166TA1975	500
Terminal bolt	M10 x 18mm	Yes	166TA1786	166TA1976	500
Terminal bolt	M10 x 22mm	No	166TA1787	166TA1977	500
Terminal bolt	M10 x 22mm	Yes	166TA1788	166TA1978	500
Terminal bolt	M10 x 25mm	Yes	166TA1789	166TA1979	500
Terminal bolt	M8 x 18mm	No	166TA1790	166TA1980	500
Terminal bolt	M8 x 18mm	Yes	166TA1791	166TA1981	500
Terminal bolt	M8 x 22mm	Voltage tap	166TA1792	166TA1982	500
Terminal bolt	M10 x 22mm	Voltage tap	166TA1793	166TA1983	500
Auxiliary terminal bolt	M10 x 22mm	AUX contact	166TA1793	166TA1983	500
Cap for auxiliary terminal bolt	-	No	166TA2547	-	-
Screw for auxiliary terminal bolt to set measuring points	-	-	150TA9732	-	-



► FLEX END TAKE-OFFS



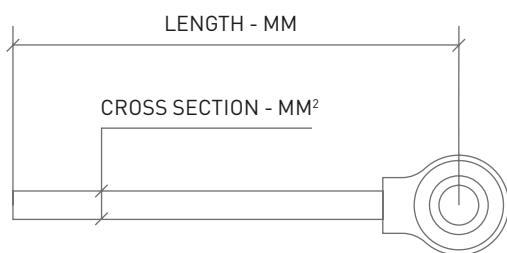
Cross section mm²	Length mm	REF 1 piece	REF box	Pieces/box	Cross section mm²	Length mm	REF 1 piece	REF box	Pieces/box
25	300	166TA1698	166TA1888	100	50	2500	166TA1722	166TA1912	10
25	500	166TA1699	166TA1889	70	50	3000	166TA1723	166TA1913	6
25	1000	166TA1700	166TA1890	40	50	3200	166TA1724	166TA1914	6
25	1200	166TA1701	166TA1891	40	50	4000	166TA1725	166TA1915	6
25	1500	166TA1702	166TA1892	30	50	5000	166TA1726	166TA1916	6
25	2000	166TA1703	166TA1893	20	70	300	166TA1727	166TA1917	80
35	300	166TA1704	166TA1894	100	70	500	166TA1728	166TA1918	50
35	500	166TA1705	166TA1895	70	70	1000	166TA1729	166TA1919	20
35	1000	166TA1706	166TA1896	40	70	1200	166TA1730	166TA1920	16
35	1200	166TA1707	166TA1897	40	70	1500	166TA1731	166TA1921	16
35	1500	166TA1708	166TA1898	30	70	2000	166TA1732	166TA1922	10
35	1600	166TA1709	166TA1899	20	70	2500	166TA1733	166TA1923	8
35	2000	166TA1710	166TA1900	20	70	3000	166TA1734	166TA1924	6
35	2500	166TA1711	166TA1901	16	70	4000	166TA1735	166TA1925	6
35	3000	166TA1712	166TA1902	16	70	5000	166TA1736	166TA1926	6
35	3500	166TA1713	166TA1903	10	70	7000	166TA1737	166TA1927	2
50	300	166TA1714	166TA1904	100	95	1000	166TA1738	166TA1928	15
50	500	166TA1715	166TA1905	50	95	1200	166TA1739	166TA1929	15
50	1000	166TA1716	166TA1906	30	95	1500	166TA1740	166TA1930	10
50	1100	166TA1717	166TA1907	26	95	1600	166TA1741	166TA1931	10
50	1200	166TA1718	166TA1908	26	95	2000	166TA1742	166TA1932	6
50	1500	166TA1719	166TA1909	26	95	2500	166TA1743	166TA1933	6
50	1600	166TA1720	166TA1910	26	95	3000	166TA1744	166TA1934	6
50	2000	166TA1721	166TA1911	16					

TERMINAL BOLTS

Type	Dimensions	Testing point	REF 1 piece	REF box	Pieces/box
Terminal bolt	M10 x 18mm	No	166TA1785	166TA1975	500
Terminal bolt	M10 x 18mm	Yes	166TA1786	166TA1976	500
Terminal bolt	M10 x 22mm	No	166TA1787	166TA1977	500
Terminal bolt	M10 x 22mm	Yes	166TA1788	166TA1978	500
Terminal bolt	M10 x 25mm	Yes	166TA1789	166TA1979	500
Terminal bolt	M8 x 18mm	No	166TA1790	166TA1980	500
Terminal bolt	M8 x 18mm	Yes	166TA1791	166TA1981	500
Terminal bolt	M8 x 22mm	Voltage tap	166TA1792	166TA1982	500
Terminal bolt	M10 x 22mm	Voltage tap	166TA1793	166TA1983	500
Auxiliary terminal bolt	M10 x 22mm	AUX contact	166TA1793	166TA1983	500
Cap for auxiliary terminal bolt	-	No	166TA2547	-	-
Screw for auxiliary terminal bolt to set measuring points	-	-	150TA9732	-	-



▶ PERFECT END TAKE-OFFS



Cross section mm ²	Length mm	REF 1 piece	REF box	Pieces/ box	Cross section mm ²	Length mm	REF 1 piece	REF box	Pieces/ box
25	700	166TA1582	166TA1796	45	50	1000	166TA1604	166TA1818	25
25	800	166TA1583	166TA1797	50	50	1400	166TA1605	166TA1819	20
25	900	166TA1584	166TA1798	45	50	1500	166TA1606	166TA1820	20
25	1000	166TA1585	166TA1799	40	50	1800	166TA1607	166TA1821	15
25	1200	166TA1586	166TA1800	40	50	2000	166TA1608	166TA1822	15
25	1400	166TA1587	166TA1801	30	50	2200	166TA1609	166TA1823	10
25	1500	166TA1588	166TA1802	30	50	2600	166TA1610	166TA1824	10
25	1800	166TA1589	166TA1803	30	50	3000	166TA1611	166TA1825	5
25	2200	166TA1590	166TA1804	15	70	600	166TA1612	166TA1826	25
25	3000	166TA1591	166TA1805	10	70	800	166TA1613	166TA1827	25
35	650	166TA1592	166TA1806	45	70	1000	166TA1614	166TA1828	25
35	800	166TA1593	166TA1807	50	70	1400	166TA1615	166TA1829	20
35	850	166TA1594	166TA1808	45	70	1500	166TA1616	166TA1830	20
35	1000	166TA1595	166TA1809	40	70	1800	166TA1617	166TA1831	15
35	1250	166TA1596	166TA1810	40	70	2200	166TA1618	166TA1832	10
35	1400	166TA1597	166TA1811	30	70	3000	166TA1619	166TA1833	5
35	1500	166TA1598	166TA1812	30	95	1000	166TA1620	166TA1834	20
35	1800	166TA1599	166TA1813	30	95	1200	166TA1621	166TA1835	20
35	2200	166TA1600	166TA1814	15	95	1500	166TA1622	166TA1836	15
35	3000	166TA1601	166TA1815	10	95	2000	166TA1623	166TA1837	10
50	600	166TA1602	166TA1816	25	95	2500	166TA1624	166TA1838	5
50	800	166TA1603	166TA1817	25	95	3000	166TA1625	166TA1839	5

TERMINAL BOLTS & CAPS

Type	Dimensions	Testing point	REF 1 piece	REF box	Pieces/ box
Terminal bolt	M10 x 20mm	No	166TA1794	166TA1984	500
Terminal bolt	M10 x 20mm	No	166TA1795	166TA1985	500
Cap		Yes	145TA2144		
Cap	-	No	145TA2145		
Auxiliary terminal bolt	M10 x 22mm	AUX contact	166TA1793	166TA1983	500
Cap for auxiliary terminal bolt	-	No	166TA2547	-	-
Screw for auxiliary terminal bolt to set measuring points	-	-	150TA9732	-	-



▶ WHY BUY FROM TVH

TVH Parts is your one-stop shop for material handling, industrial and agricultural equipment parts and accessories.

You'll be amazed by our extensive range of attachments and internal transport equipment. In addition to our own brands such as TotalSource®, CAM attachments® and Energic Plus®, TVH also partners with a variety of top-quality brands.

You're guaranteed premium service and fast delivery — within 24/48 hours.

THE MANY BENEFITS OF TVH

- ▶ One-stop shop
- ▶ Webshop & online support
- ▶ Same-day shipment, next-day delivery
- ▶ Customer support in 37 languages
- ▶ Technically skilled employees
- ▶ Active in over 180 countries

YOUR GLOBAL ONE-STOP SHOP FOR PARTS AND ACCESSORIES FOR MATERIAL HANDLING, INDUSTRIAL AND AGRICULTURAL EQUIPMENT



- ▶ More than 750 000 stock items and 37 000 000 known references



- ▶ 50 years of experience in the business
- ▶ Technically skilled employees and customer support in 37 languages



- ▶ Easily search for parts online 24 hours a day, 7 days a week, via MyTotalSource
- ▶ Same-day shipment, next-day delivery

► NOTES

Dotted lines for writing notes.



© 01-2020 · TVH Parts Holding nv, Brabantstraat 15, B-8790 Waregem. All rights reserved. No part of this publication may be reproduced or communicated in any form or by any means, electronic or mechanical, including copying, recording or use in an information storage or retrieval system, without prior and explicit permission of TVH Parts Holding nv. TVH® is a registered trademark. All other trademarks or tradenames in this publication are the property of their respective owners. Photographs are included for reference purposes only. All sales are subject to the general terms & conditions of sale on www.tvh.com/avv. TVH 47404801



TVH PARTS NV

Brabantstraat 15 · 8790 Waregem · Belgium

T +32 56 43 42 11 · F +32 56 43 44 88 · info@tvh.com · www.tvh.com