



INSTRUCTION MANUAL

PALLET TRUCK WITH SCALE WRZ-ES

TOTAL SOURCE[®]

TABLE OF CONTENTS

1. GENERAL SPECIFICATIONS	4
2. INSTALLATION & ASSEMBLY	5
2.1. Handle attachment	5
2.2. Weight gauge installation	6
3. TO ADJUST RELEASE DEVICE	8
4. MAINTENANCE	8
4.3. Oil	8
4.4. How to expel air from the pump unit	8
4.5. Daily check and maintenance	9
4.6. Lubrication	9
5. GUIDE TO SAFE OPERATION	9
6. TROUBLESHOOTING	10
7. BATTERY POWER DATA AND REPLACEMENT	11
8. TROUBLESHOOTING OF WEIGHING UNIT	11
9. PARTS LIST	13

Thank you for using this hand pallet truck with scale. For your safety and correct operation of the scale, please read these instructions carefully before using it.

NOTE:

- (1) All of the information reported herein is based on data available at the moment of printing. The factory reserves the right to modify its own products at any moment without notice and incurring any sanction. So it is suggested to always verify possible updates.
- (2) For systems with a printer, the rechargeable batteries must be charged before use, according to the instructions supplied with the batteries.

1. GENERAL SPECIFICATIONS

Model		Capacity (kg)	Graduation (kg)	Weighing Accuracy (%)	Fork size			Net weight (kg)
					Length (mm)	Width over forks (mm)	Fork Width (mm)	
WRZ-ES 540	Without	2000/3000	1	±1	1150	540	160	115
WR-ES 685	printer	2000/3000	1	±1	1150	685	160	119

Materials and specifications are subject to change without notice.

2. INSTALLATION & ASSEMBLY

2.1. Handle attachment

Unpacking

Open shipping container and check for shipping damage. Report any damage immediately to your distributor and shipping agent. Do not discard any shipping material until the Pallet Truck is assembled and working properly.

Individual trucks are assembled and ready to use. Pallet trucks purchased in crate quantities (6 units to a crate) require some assembly.

Match the “letter” label on the handle assembly to the “letter” label on the frame prior to assembly.

Assembly

Tools required for assembly:

Hammer

Flat Head Screwdriver

Pliers

1. Insert the base of the handle into the pump bracket (Figure 1). Align the holes at the base of the handle with the holes in the pump bracket.
2. Use a hammer to tap the handle pin into the holes of the pump bracket and handle (Figure 2). Use pliers to turn the handle pin until its holes align with the spring pin holes.
3. Feed the screw head through the center hole in the handle pin (Figure 3). Using a screwdriver, pry up the cam and slip the screw head under the notch in the cam.
4. Use a hammer to tap the spring pins (Figure 2) into the holes on the pump bracket and handle pin.
5. Tap out the pump retainer pin (Figure 1).

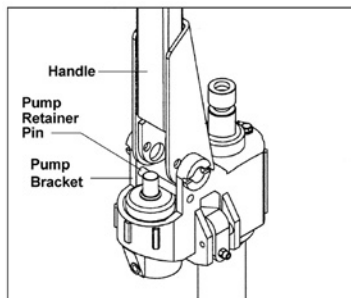


Figure 1

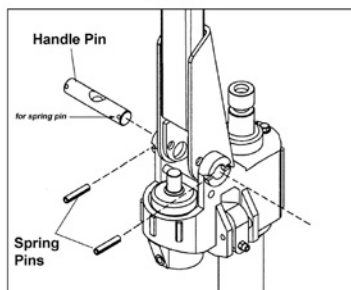


Figure 2

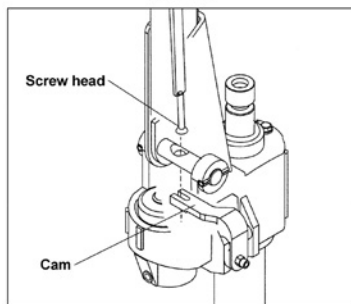


Figure 3

2.2. Weight gauge installation

Step 1

Remove Display from box.



Step 2

Remove x4 screws which holds the display in in the frame casing.



Step 3

Remove the display from the mount frame.



Step 4

You will need to remove the 3 mounting bolts on the HPT



Step 5

Once the mounting bolts are removed pull through VGA cable



Step 6

Align the display mount frame (Step 3) up with the fixation holes on the HPT (Step 4) making sure the cable all still accessible.



Step 7

Use the 3 mounting bolts removed in step 3 to fix the display mounting frame in place.



Step 8

Connect the VGA cable to the back of display screen and tighten screws.



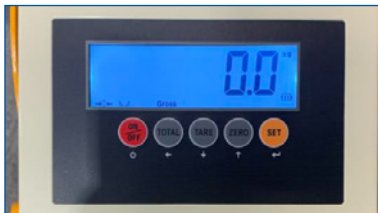
Step 9

Fit display screen back into the display mount frame and tighten with the 4 screws removed in step 2



Step 10

Finally power on the display to check.



3. TO ADJUST RELEASE DEVICE

On the handle of the pallet truck, you will find the control lever (81) which can be set in three positions (See Fig. 4): LOWER=to lower the forks; NEUTRAL=to move the load; ASCENT=to raise the forks. After assembling the handle, you can adjust the three positions.

- 3.1 First tighten the setting screw (59) on the cam (56) until the LOWER position function works.
- 3.2 If the forks elevate while pumping in the NEUTRAL position, turn the setting screw (59) clockwise until pumping the handle does not raise the forks and the NEUTRAL position functions correctly.
- 3.3 If the forks descend while pumping in the NEUTRAL position, turn the setting screw (59) counter-clockwise until the forks do not lower.
- 3.4 If the forks do not descend when the control lever (81) is in the LOWER position, turn the setting screw (59) clockwise until raising the control lever (81) lowers the forks. Then check the NEUTRAL position as per item 3.2 and 3.3.
- 3.5 If the forks do not lift while pumping in the ASCENT position, turn the setting screw (59) counter-clockwise until the forks elevate while pumping in the ASCENT position. Then check the NEUTRAL and LOWER position as per item 3.2, 3.3 and 3.4.

4. MAINTENANCE

4.3. Oil

Please check the oil level every six months. The volume of oil is about 0.3lt. Use the hydraulic type oil according to temperature scale below.

Temperature	Oil
-20°C~+40°C	L-HV32 Hydraulic oil

4.4. How to expel air from the pump unit

Air may get into the hydraulics during transportation or when a pump is stored upside down. This can prevent the forks from lifting while pumping with the lever in the ASCENT position. The air can be expelled in the following way: Lift the control lever to the LOWER position, then move the handle up and down several times.

4.5. Daily check and maintenance

Daily check of the pallet truck will limit wear as much as possible. Give special attention to the wheels the handle, the forks and lift and lower control. The forks should be unloaded and lowered in the lowest position when the job is over.

4.6. Lubrication

Use motor oil or grease to lubricate all moveable parts.

5. GUIDE TO SAFE OPERATION

For safe operation of the truck, please read all warning signs and instructions here and on the truck before using this truck.

- 5.1 Do not operate the pallet truck unless you are familiar with it and have been trained or authorized to do so.
- 5.2 Do not operate the truck unless you have checked its condition. Give special attention to the wheels, the handle assembly, the forks, lift and the lower control.
- 5.3 Do not use the truck on sloping ground.
- 5.4 Never place any part of your body in the lifting mechanism or under the forks or load. Do not carry passengers.
- 5.5 The operator should wear gloves and safety shoes for protection.
- 5.6 Do not handle unstable or loosely stacked loads.
- 5.7 Do not overload the truck.
- 5.8 Do not subject to unbalanced load, either side to side or along the length of the frame (refer to Fig. 5/B).
- 5.9 The capacity of the truck assumes an evenly distributed load with the centre of the load being at the half way point of the length of the forks (refer to Fig.5)
- 5.10 Make sure that length of the forks matches the length of the pallet.
- 5.11 Lower the forks to lowest height when the truck is not being used.
- 5.12 At other specific conditions or places, the operator should operate the pallet truck carefully.

6. TROUBLESHOOTING

No	Trouble	Cause	Solution
1	The forks cannot be lifted to max. height	<ul style="list-style-type: none"> · There is not enough hydraulic oil. 	<ul style="list-style-type: none"> · Pour in enough filtered oil.
2	The forks do not lift up.	<ul style="list-style-type: none"> · There is no hydraulic oil. · The oil has impurities. · Discharge valve is out of adjustment. · Air in the hydraulic oil. 	<ul style="list-style-type: none"> · Pour in more filtered oil. · Change the oil. · Adjust the setting screw. · Expel the air.
3	The forks cannot be lowered.	<ul style="list-style-type: none"> · The rod and the cylinder become deformed due to serious unbalanced load. · Component deformation due to unbalanced load. · The forks were kept at high position for long time with rod bared which became rusty. · The setting screw is not in the correct position. 	<ul style="list-style-type: none"> · Replace the rod or cylinder. · Repair or replace component to make it run smoothly. · Remove the rust on the rod. Keep the forks at lowered when not in use. · Adjust the setting screw.
4	Leaks	<ul style="list-style-type: none"> · Seals worn out or damaged. · Some parts may be cracked or worn out. 	<ul style="list-style-type: none"> · Replace seals with new ones. · Check and replace with new ones.
5	The forks descend without the discharge valve worked	<ul style="list-style-type: none"> · Impurities in the oil cause the discharge valve to fail to close. · Air in the oil. · Seals worn or damaged. · Discharge valve is out of adjustment. 	<ul style="list-style-type: none"> · Replace with filtered oil. · Expel the air. · Replace with new ones. · Adjust the setting screw

***NOTE: DO NOT ATTEMPT TO REPAIR THE PALLET TRUCK UNLESS YOU ARE TRAINED AND AUTHORIZED TO DO SO.**

7. BATTERY POWER DATA AND REPLACEMENT

The indicator on the pallet truck scale uses maintenance free lead-acid battery as power supply. Rechargeable batteries need to be charged, according to their own instruction.

7.1 How to change batteries:

7.1.1 Remove the weighing instrument.

7.1.2 Loosen the screws on the battery cover and remove the cover.

7.1.3 Pull out plug, replace new batteries, then put plug onto socket.

7.1.4 Screw the battery cover plate back into position.

8. TROUBLESHOOTING OF WEIGHING UNIT

No	Trouble	Cause	Shooting
1	HELP1 in the display	<ul style="list-style-type: none">· The load is too big for the scale	<ul style="list-style-type: none">· Remove the load immediately.
2	The scale is not accurate	<ul style="list-style-type: none">· The fork shoe is touching the bottom part of the scale· Cable in junction box is loose.· 1 of the load cells is broken	<ul style="list-style-type: none">· Remove anything that restricts the movement of the scale.· Check the connection in junction box after confirming safe.· Stand on the 4 corners of the scale. The load cell in the corner with a different weight should be replaced.
4	Indicator can't be turned on.	<ul style="list-style-type: none">· Battery voltage is too low.· Battery life is complete.· Charger is damaged.	<ul style="list-style-type: none">· Charge the batteries.· Replace rechargeable battery with new ones.· Check charger output voltage replace charger with new one.
5	Battery can't be charged.	<ul style="list-style-type: none">· Battery is damaged.· Charger is damaged.	<ul style="list-style-type: none">· Replace rechargeable battery with new ones.· Check charger output voltage replace charger with new one.

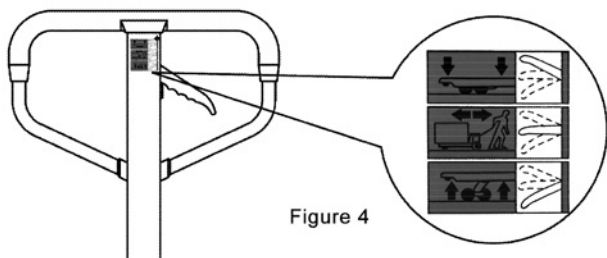


Figure 4

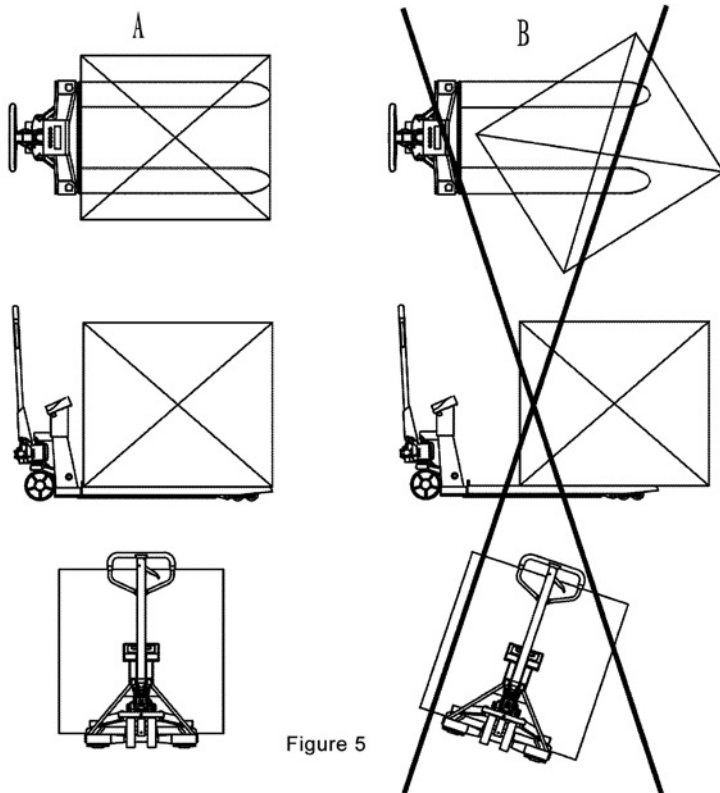
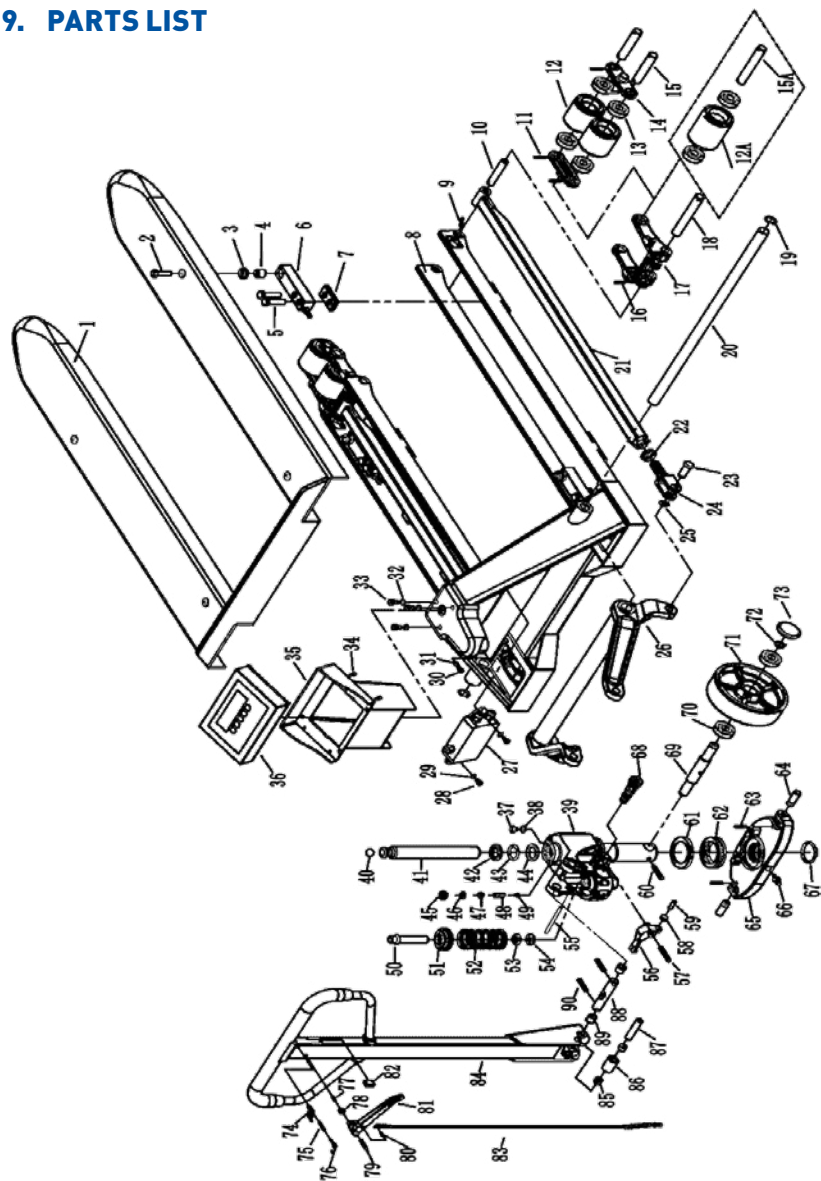


Figure 5

9. PARTS LIST



Part No.	Description	Qty
1	Forks Cover	1
2	Screw M12x42	4
3	Convex Washer	4
4	Concave Washer	4
5	Screw M12x55	8
6	Load Cell	4
7	Plate	4
8	Truck Frame	1
9	Spring Pin 5x30	2
10	Shaft	2
11	Spring Pin 5x35	8
12	Load Wheel	4
12A	Load Wheel	2
13	Bearing 6204	8
14	Balance Plate	4
15	Load Wheel Axle	4
15A	Load Wheel Axle	2
16	Spring Pin 5x25	2
17	Load Wheel Frame	2
18	Shaft Of Fork Wheel Frame	2
19	Snap Ring 25	2
20	Crank Shaft	1
21	Push Rod	2
22	Hex Nut M20	2
23	Crank Pin	2
24	Joint Of Push Tappet	2
25	Snap Ring 16	2
26	Transmission Arm	1
27	Junction Box	1
28	Hexagon Socket Screw M6x12	2
29	Flat Washer 6	2
30	Hexagon Socket Screw M6x14	1
31	Spring Washer 6	1

Part No.	Description	Qty
45	Oil Plug	1
46	O-Ring	1
47	Pressure Adjust Screw	1
48	Spring	1
49	Needle Valve	1
50	Plunger Piston	1
51	Spring Cap	1
52	Spring	1
53	Dust Seal Ring	1
54	U-Ring	1
55	Pump Retainer Pin	1
56	Cam	1
57	Spring Pin 8x50	1
58	Hex Nut	1
59	Socket Head Cap Screw	1
60	Spring Pin 8x45	1
61	Dust Seal Cap	1
62	Ball Bearing	1
63	Spring Pin 5x30	2
64	Table Pin	2
65	Table	1
66	Grease Fitting	1
67	Snap Ring 48	1
68	Valve Assembly	1
69	Wheel Shaft	1
70	Ball Bearing 6204	4
71	Steering Wheel	2
72	Snap Ring 20	2
73	Dust Seal Cap	2
74	Block Spring	1
75	Spring Pin 4x30	1
76	Spring	1
77	Spring Pin 4x16	1

Part No.	Description	Qty
32	Spring Washer 8	3
33	Hexagon Screw M8×12	3
34	Screw M4×14	8
35	Instrument Housing	1
36	Weighing Instrument	1
37	Oil Plug	1
38	Oil Seal 16×10×2	1
39	Pump Housing	1
40	Steel Ball 18	1
41	Ram Piston	1
42	Dust Seal Ring	1
43	O-Ring	1
44	U-Ring	1

Part No.	Description	Qty
78	Roller	1
79	Spring Pin 6×30	1
80	Spring Pin 4×12	1
81	Control Lever	1
82	Plastic Mat	1
83	Release Rod	1
84	Handle	1
85	Oil Lite Bushing	2
86	Roller	1
87	Roller Pin	1
88	Handle Pin	1
89	Oil Lite Bushing	2
90	Spring Pin 5×35	2

TOTALSOURCE[®]

Your distributor:



Manufactured outside the EU for:



TVH AUSTRALIA PTY LTD · HEAD OFFICE BRISBANE
ABN 67 117 701 587 · 60 Bernoulli Street · Darra QLD 4076 · Australia
T +61 7 3717 3222 · F +61 7 3275 3881 · info.au@tvh.com · www.tvh.com